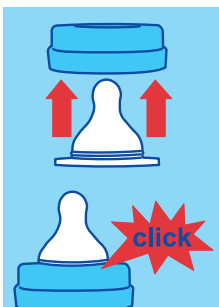


TRAINER

- Clean before first and every use.
- Before first use separate all parts and place them in boiling water for 5 minutes. This is to ensure hygiene.
- Check all components before each use and throw away at the first signs of damage or weakness.
- To prevent possible choking hazard, test strength of nipple by pulling on bulb portion.
- Discontinue use if any tear or crack appears.
- Dishwasher safe in top rack (149° F / 65° C) but food colorings may discolor components.
- Do not use abrasive cleaning agents. Only soft bristle brushes or soft sponges should be used. Hard scourers may scratch the plastic.
- All cup parts must be disassembled before heating (especially microwave heating) or cooling. Stir thoroughly after heating to evenly distribute heat. After heating allow cup to cool.
- To sterilize using one of the following methods: steam sterilizing (electric or microwave according to manufacturers instructions), boiling in water for at least 5 minutes or liquid sterilizing solution. After boiling or sterilizing allow all parts to cool.
- Do not leave single bottle parts in direct sunlight or heat, or leave in sterilizing solution for longer than recommended, as this may affect the product function.
- The trainer is made of polypropylene which is hygienic, easy to clean and relatively soft. Avoid any heavy pressure on it, as this could affect the function.
- Ensure that the holes are not blocked.
- Do not store or use with hot (above 104° F / 40° C) beverages.
- Store nipples/spouts in a dry, sealed container.
- To improve the spill proofness after filling we recommend to squeeze the assembled spout underneath the top tightly. This creates a vacuum which prevents leaking. Always check if spout and valve are in the right position (“click”).
- The spout will not remain leak-proof for carbonated drinks.
- Although the spout is spill-proof, a few residual drops may remain in the spout after drinking. If shaken heavily this small amount may drip out.
- To avoid injury, do not let baby walk with Trainer.
- Do not let a child take a bottle to bed or self-feed for a long period. Prolonged contact with liquids may cause severe tooth decay.
- Nipple, spout and handles are compatible with all MAM wide neck bottles 5 oz. or larger and the Trainer.



Assembling NIPPLE:

Insert nipple into top of bottle screw ring until you hear a “click”.

Place the handles over the bottle neck and screw the nipple onto the bottle tightly.

Assembling SPOUT:

Push the valve into the spout till it ‘clicks’ into position, then pull the spout with the valve into the screw ring till it ‘clicks’ into position. Place the handles over the bottle neck and screw the spout onto the bottle tightly.

HEATING INSTRUCTIONS:

- NEVER pour boiling water into the Trainer.
- NEVER heat or cool a sealed Trainer. Remove the protective cap and spout or nipple before heating, especially before microwave and bottle warmer heating.
- Stir thoroughly after heating to evenly distribute heat. Allow the standing time recommended by the microwave manufacturer.

▲ WARNING- For your child’s safety and health!

- Always use this product with adult supervision.
- Never use feeding nipples as a pacifier.
- Continuous and prolonged sucking of fluids will cause tooth decay.
- Always check food temperature before feeding.
- Keep all components not in use out of the reach of children.

STARTER CUP

- Clean before first and each use.
- Before first use place spout, valve and cup separately in boiling water for 5 minutes. This is to ensure hygiene.
- To prevent possible choking hazard, test strength of nipple by pulling on bulb portion. Discontinue use if any tear or crack appears.
- Check all components before each use and throw away at the first signs of damage or weakness.
- To ensure proper cleaning/sterilizing all cup parts MUST be disassembled before cleaning.
- Cleaning/sterilizing while assembled can damage the cup.
- All parts are top rack dishwasher safe (up to 149° F / 65° C). Food colorings may discolor components.
- Do not use abrasive cleaning agents. Only soft bristle brushes or soft sponges should be used.
- To sterilize: in boiling water or liquid sterilizing solution, steam sterilizing (electric or microwave according to manufacturer's instructions).
- Do not leave cup, valve and spout in direct sunlight or heat, as this may affect the product function.
- Ensure that the holes of the spout are not blocked.
- Do not store or use for hot (above 104° F / 40° C) beverages.
- The cup will not remain spill-proof if used for carbonated drinks.
- To avoid injury, do not let toddler walk with the cup.
- Do not let a child take a bottle to bed or self-feed for a long period. Prolonged contact with liquids may cause severe tooth decay.
- All cup parts must be disassembled before heating (especially microwave heating) or cooling. Stir thoroughly after heating to evenly distribute heat. After heating allow cup to cool.

▲ WARNING- For your child's safety and health!

- Always use this product with adult supervision.
- Continuous and prolonged sucking of fluids will cause tooth decay.
- Always check food temperature before feeding.
- Keep all components not in use out of the reach of children.

LEARN TO DRINK / FUN TO DRINK / SPORTS CUP

- Only use with MAM valves.
- Clean before first and every use.
- Before first use place spout, valve and cup separately in boiling water for 5 minutes. This is to ensure hygiene.
- Check all components before each use and throw away at the first signs of damage or weakness.
- To ensure proper cleaning/sterilizing all cup parts MUST be disassembled before cleaning.
- Cleaning/sterilizing while assembled can damage the cup.
- All parts are top rack dishwasher safe (up to 149° F / 65° C). Food colorings may discolor components.
- Do not use abrasive cleaning agents. Only soft bristle brushes or soft sponges should be used.
- To sterilize: in boiling water or liquid sterilizing solution, steam sterilizing (electric or microwave according to manufacturer's instructions).
- Do not leave cup, valve and spout in direct sunlight or heat, as this may affect the product function.
- Ensure that the holes of the spout are not blocked.
- Do not store or use for hot (above 104° F / 40° C) beverages.
- The cup will not remain spill-proof if used for carbonated drinks.
- To avoid injury, do not let toddler walk with the cup.
- Do not let a child take a bottle to bed or self-feed for a long period. Prolonged contact with liquids may cause severe tooth decay.
- All cup parts must be disassembled before heating (especially microwave heating) or cooling. Stir thoroughly after heating to evenly distribute heat. After heating allow cup to cool.

▲ WARNING- For your child's safety and health!

- Always use this product with adult supervision.
- Continuous and prolonged sucking of fluids will cause tooth decay.
- Always check food temperature before feeding.
- Keep all components not in use out of the reach of children.