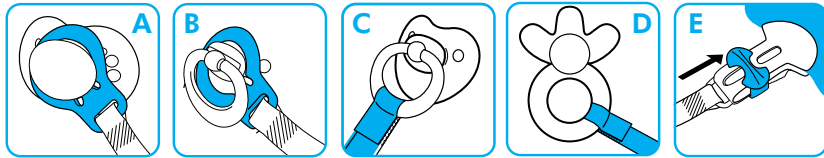


CLIPS

- When used with a MAM or other button pacifier, press the ring over the button of the pacifier (Diagram A).
- When used with a ring pacifier, put the transparent ring over the whole handle of the pacifier (Diagram B), or attach the ribbon directly to the pacifier ring using the fastener (Diagram C).
- The fastener securely holds not only pacifiers but also teethers, small toys and more (Diagram D).
- The clip is opened by moving the slider towards the leash and closed by clicking the slider towards the rounded end (Diagram E).



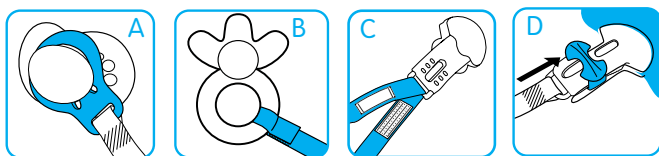
- The pacifier clip should only be attached to garments.
- The clip should always be stored and cleaned in the open position to avoid the clip spring losing its strength. Do not store in the closed position.
- Regularly clean the clip and ring with warm water and mild cleaning agent. Rinse thoroughly. DO NOT BOIL, steam or microwave sterilize.
- Do not use solvents or abrasive cleaning agents as these could damage the product.
- The length controller can be used to lengthen or shorten the clip leash by simply pulling it up or down along the leash.

▲ WARNING- For your child's safety and health!

- Before each use check carefully. Throw away at the first sign of damage or weakness.
- Never lengthen the pacifier holder!
- Never attach to cords, ribbons, laces or loose parts of clothing. The child may be strangled.
- The use of a clip with a sleeping baby, as well as in beds, cribs, cots or strollers is not recommended.
- Ensure both ends of the pacifier clip are fastened before leaving your child unattended.
- The pacifier clip should not be used as a teether or toy.

FASHION CLIPS

- When used with a MAM or other button pacifier, press the transparent ring over the button of the pacifier (Diagram A).
- The flexible loop on the MAM clip securely holds not only pacifiers but also teethers, small toys and much more (Diagram B).
- For the Fashion Clip, change the leash by opening the fastener and detaching the leash from the bottom of the clip. Attach the new leash by inserting it in the loop at the bottom of the clip and close the fastener (Diagram C).
- The clip fastener is opened by moving the slider towards the leash and closed by clicking the slider towards the rounded end (Diagram D).



- The pacifier clip should only be attached to garments.
- The clip fastener should always be stored and cleaned in the open position to avoid the clip spring losing its strength. Do not store in the closed position.
- Regularly clean the clip and ring with warm water and mild cleaning agent. Rinse thoroughly. DO NOT BOIL, steam or microwave sterilize.
- Do not use solvents or abrasive cleaning agents as these could damage the product.

PACIFIER WIPES

- MAM pacifier wipes are made with the safest ingredients. Any time your baby's pacifiers, teethers or toys are dropped, you can simply wipe clean and air dry. The items are clean and safe to put in baby's mouth. Lift lid to open and peel back the seal. Keep lid closed when not in use.