

## BITE & RELAX PHASE 1 & 2

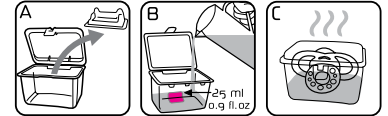
- Sterilize the teether before first use.
- Can be sterilized by boiling, cold water method, steam and microwave steam sterilizing.
- Dishwasher safe (in top rack to a max. temperature of 149° F /65° C). Food colorings may discolor components.
- Clean regularly with warm, soapy water.

### **▲ WARNING- For your child's safety and health!**

- Inspect teether before and after each use and discard if worn or damaged!

## Sterilizer Box Instructions

- Remove tamper-proof closure and any stickers from the box.
- Remove plastic inlay from box (Diagram A).
- Wash teether and box with mild soapy water and then rinse with clean water before use.
- When using the self-sterilizing method, please ensure the teether, box and microwave (including the waveguide-cover and turntable) are COMPLETELY CLEAN and free from dirt, food residue, fat or oil splashes. If not, this could lead to the product or box melting and the microwave sparking or the waveguide cover burning!
- Hold box and fill to the mark with 25ml / 0.9 fl oz of water (Diagram B).
- Place teether in the box.
- Close box and heat in the microwave at 750 - 1,000 watts for 3 minutes (Diagram C).
- Allow to cool for at least 10 minutes.
- Open microwave. CAUTION! The box, water and the teether may still be very hot after the 10 minute cooling period!
- Open box and drain remaining water. Leave teether to dry in open box.
- Check the temperature of the teether before use!
- Improper water level, power level or time setting can damage the microwave, the teether and the box and result in poor disinfection!
- For use only with MAM teethers!
- Keep all parts of the sterilizer box away from children.



## BITE & BRUSH

- Sterilize the teether before first use.
- Dishwasher safe (in top rack to a max. temperature of 149° F / 65° C).
- Clean regularly with warm, soapy water.
- Can be sterilized by cold water method, steam and microwave steam sterilizing.

### **▲ WARNING- For your child's safety and health!**

- Inspect teether before and after each use and discard if worn or damaged!

## COOLER / MINI COOLER & CLIP

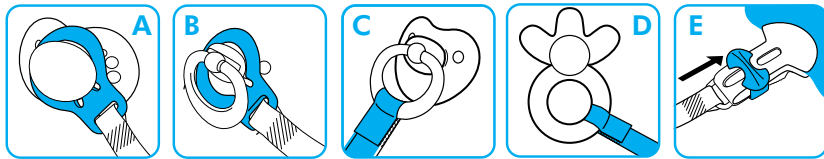
- Wash before first use and regularly with hot water and mild detergents.
- For optimum cooling effect, put the teether in the refrigerator for one hour.
- Cool only in a refrigerator. Do not place in the freezer compartment.

### **▲ WARNING- For your child's safety and health!**

- Inspect before and after each use and discard if worn or damaged!
- Do not boil, steam or microwave sterilize. For cleaning wash with hot water.
- The teether is for children between 0-3 years. Older children can bite through the waterfilled section. The waterfilling is harmless and controlled regularly.

## CLIP

- When used with a MAM or other button pacifier, press the ring over the button of the pacifier (Diagram A).
- When used with a ring pacifier, put the transparent ring over the whole handle of the pacifier (Diagram B), or attach the ribbon directly to the pacifier ring, using the fastener (Diagram C).
- The fastener securely holds not only pacifiers but also teethers, small toys and much more (Diagram D).
- The clip is opened by moving the slider towards the leash and closed by clicking the slider towards the rounded end (Diagram E).



- The pacifier clip should only be attached to garments.
- The clip should always be stored and cleaned in the open position to avoid the clip spring losing its strength. Do not store in the closed position.
- Regularly clean the clip and ring with warm water and mild cleaning agent. Rinse thoroughly. DO NOT BOIL, steam or microwave sterilize.
- Do not use solvents or abrasive cleaning agents as these could damage the product.

### **▲ WARNING- For your child's safety and health!**

- Before each use check carefully. Throw away at the first sign of damage or weakness.
- Never lengthen the pacifier holder!
- Never attach to cords, ribbons, laces or loose parts of clothing. The child may be strangled.
- The use of a clip with a sleeping baby, as well as in beds, cribs, cots or strollers is not recommended.
- Ensure both ends of the clip are fastened before leaving your child unattended.
- The clip should not be used as a teether or toy.