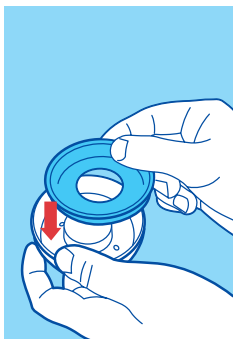
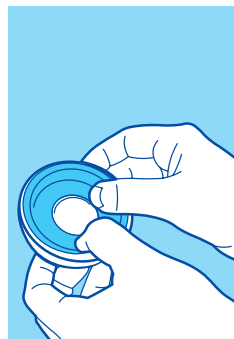


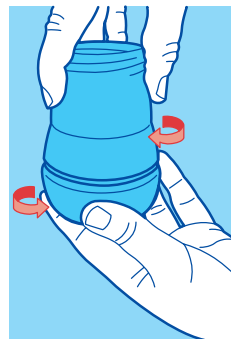
- Clean before first and each use.
- Before first use separate all 6 parts and place them in boiling water for 5 minutes. This is to ensure hygiene.
- Inspect before each use and pull the feeding nipple in all directions. Throw away at the first signs of damage or weakness.
- To ensure proper cleaning/sterilizing all bottle parts **MUST** be disassembled.
- Cleaning/sterilizing while assembled can damage the bottle.
- Sterilize using one of the following methods: steam sterilizing (electric or microwave according to manufacturer’s instructions), boiling in water for at least 5 minutes or liquid sterilizing solution.
- Dishwasher safe on top dishwasher rack (max. 65° C / 149° F) but food colorings may discolor components.
- Ensure valve is assembled correctly and the base of the bottle is firmly attached prior to filling bottle with liquid (Diagram 1 & 2).
- Always use only MAM nipples with the MAM bottles.
- Bottle nipple fits all MAM wide neck bottles 5 oz or larger and the Trainer.
- Store nipples and valves in a dry sealed container.
- Use sugar free food or liquids only.
- The bottle is made of polypropylene which is hygienic, easy to clean and relatively soft. Avoid any heavy pressure on it, as this could affect the function.
- Do not use abrasive cleaning agents. Only soft bristle brushes or soft sponges should be used. Hard scourers may scratch the plastic and silicone valves.
- Do not leave single bottle parts in direct sunlight or heat, or leave in sterilizing solution for longer than recommended, as this may affect the product function.
- Do not use pins or sharp objects to enlarge feeding hole of nipple.
- To avoid injury, do not let baby walk with bottle.



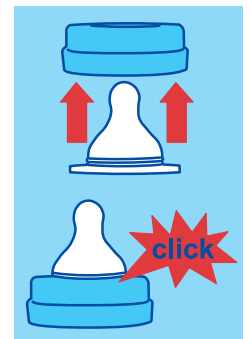
1 Place silicone valve into bottom ring.



2 Press down on raised silicone valve.



3 Screw assembled base onto bottom of bottle in slow steady manner.



4 Insert nipple into top of bottle screw ring until you hear a "click".

Heating instructions:

- Remove the protective cap and nipple before heating.
- Place in a bottle warmer, under hot running water or in a container of heated water.
- Stir thoroughly after heating to evenly distribute heat. Allow the standing time recommended by the bottle warmer manufacturer and test the temperature before serving.
- Wrap cloth or towel around bottom of bottle and shake to absorb any excess water after warming in a bottle warmer or boiling water.
- After warming the bottle in a bottle warmer or boiling water it is recommended to tighten the bottom of the bottle.
- Do not overheat as this may damage the bottle.
- NEVER pour boiling water into the bottle.
- NEVER heat or cool a sealed bottle.
- NEVER place bottle in heated oven.

⚠ WARNING - for your child's safety and health!

- Wash all parts prior to use.
- Always use this product with adult supervision.
- Never use feeding nipples as a pacifier.
- Continuous and prolonged sucking of fluids will cause tooth decay.
- Always check food temperature before feeding.
- Keep all components not in use out of the reach of children.
- Do not let babies self-feed.
- Do not put your baby to bed with bottle.
- To prevent possible choking hazard, test strength of nipple by pulling on bulb portion. Discontinue use if any tear or crack appears.

Self-sterilizing function of Anti-Colic Bottle:

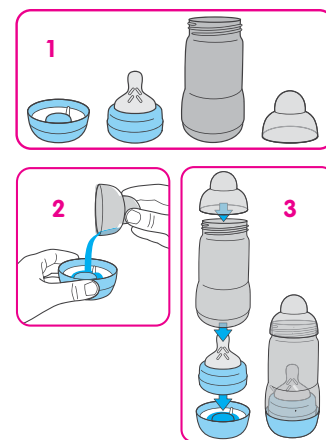
The Anti-Colic Bottle can be transformed into a self-sterilizing bottle by 3 simple steps. Thereby making further disinfection unnecessary. Always clean bottle parts before using the sterilizing function!

Step 1: For the self-disinfection of the Anti-Colic bottle assemble clean bottle parts in the following way: base with silicone valve, nipple with screw ring, bottle body and protective cap.

Step 2: Fill the base with silicone valve with 20 ml of cool water. The protective cap makes a practical measuring cup.

Step 3:

- Place the screw ring with nipple in the bottle base.
- Place the bottle body on it (Optionally screw in slightly to avoid pouring out hot water by removing the bottle from microwave).
- Place the protective cap on top.



Disinfection in the microwave:

- Set the microwave timer according to the number of bottles being simultaneously sterilized. Set microwave from 500 to 1000 watts.
- Allow bottle to cool down before removing from microwave. Recommended cooling time: 10 minutes at opened microwave door.
- Pour out the remaining water. Allow bottle parts to dry. Always store bottle assembled.

Number of bottles sterilized at the same time	1	2	3	4	5	6
Estimated duration of sterilizing [min]	3	4	5	6	7	8

Additional Instructions:

- Do not prop bottle to feed.
- The self-sterilizing bottle should only be placed on solid and flat surfaces.
- When using multifunctional devices pay attention to the instructions of the manufacturer.
- Always set the microwave to the correct power and time.
- Filling the base with inaccurate water measures can damage the bottle. Never place in the microwave without water.
- If using a combination microwave oven, ensure that the self-sterilizing bottle is not exposed to the heat of the grill because this will damage it.
- ATTENTION when dealing with sterilized products since they may still be hot.
- Wash hands before using sterilized products.
- Always store the bottle dry.
- Hold the self-sterilizing bottle straight when removing from microwave to avoid pouring out hot residual water.
- Do not wash self-sterilizing bottle after sterilizing.
- Do not touch the nipple after sterilizing. Handle nipple by using the screw ring.